

Joan Miró

Joan Miró was a Spanish Catalan painter, born in Barcelona in 1893.

As well as painting, he enjoyed sculpting and printmaking.

Before he became an artist, he attended business school and worked as a clerk. He painted in different styles throughout his life.

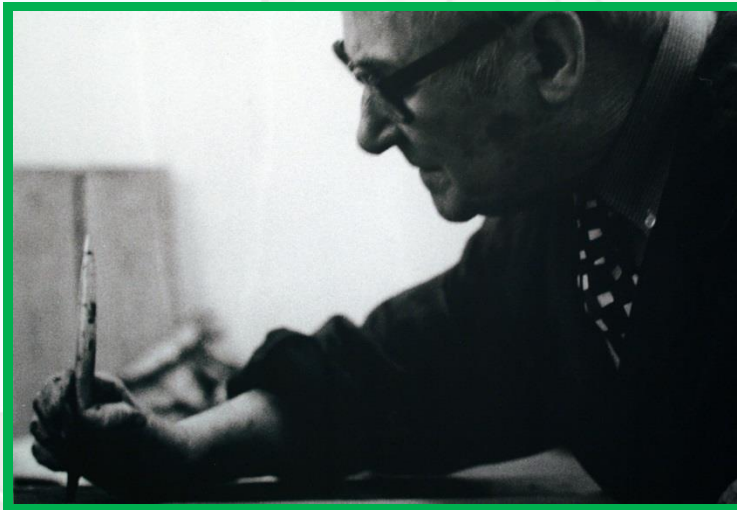


Photo courtesy of [allienato](#), [ThierryChervel@flickr.com](#)) - granted under creative commons licence – attribution

Magical Realism



Photo courtesy of <http://www.museoreinasofia.es/en/collection/artwork/casa-palmera-house-palm-tree>

Vines and Olive Trees, Tarragona. 1919

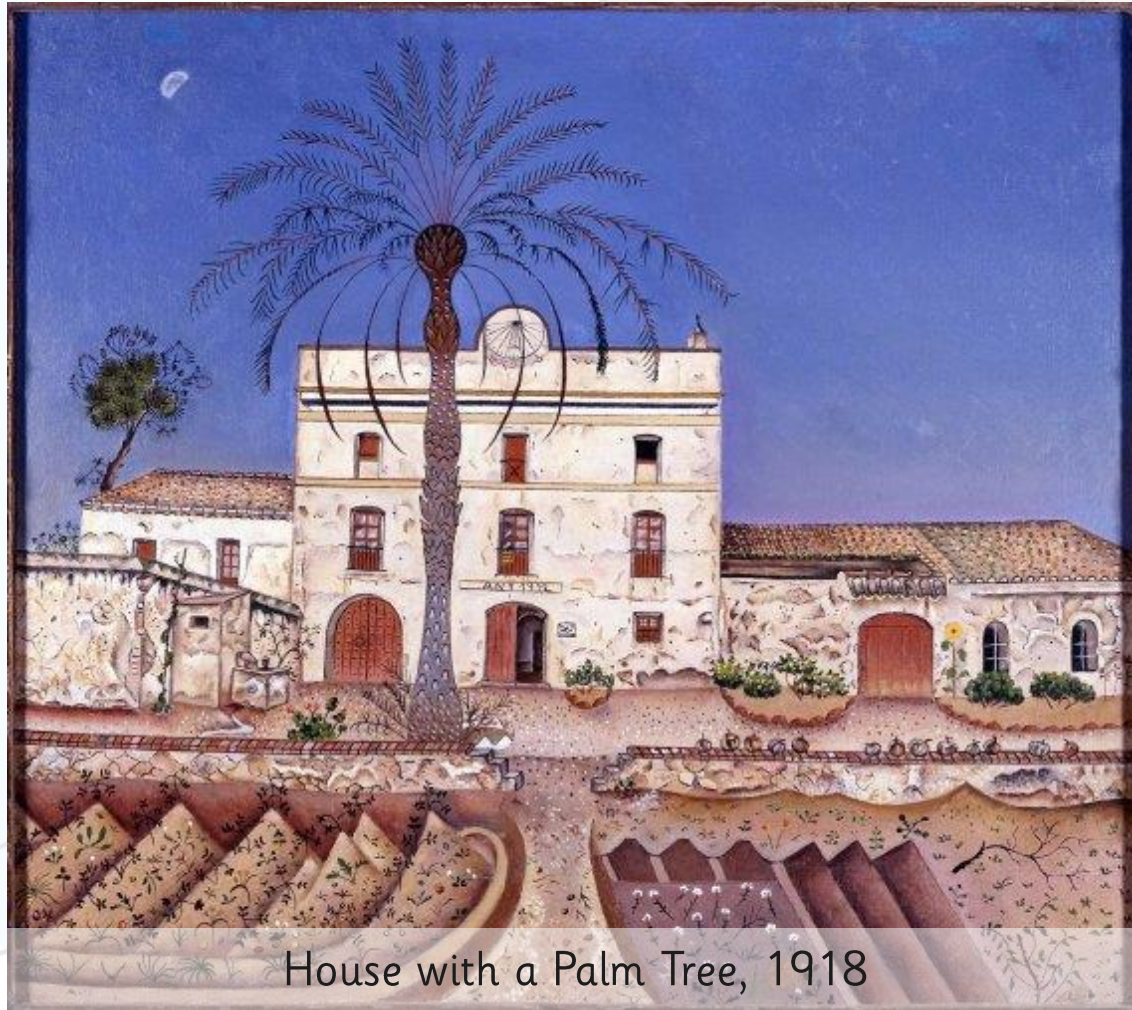
From 1920, Miró painted in a Magical Realist style. He painted carefully, and made things look quite realistic.

Some parts of his paintings seem slightly strange or unusual. The paintings feel almost real, but as if something is not quite right. This creates a feeling that the paintings are magical, or like a dream.



Photo courtesy of <http://www.museoreinasofia.es/en/collection/artwork/casa-palmera-house-palm-tree>

Magical Realism



House with a Palm Tree, 1918

Photo courtesy of <http://www.museoreinasofia.es/en/collection/artwork/casa-palmera-house-palm-tree>

Magical Realism

The Table – Still Life with Rabbit, 1920

In this painting, Miró combines 2 different ways of painting.

He has painted the animals realistically, and included lots of detail.

He has used lots of triangles to paint the table, floor, wall, and jug. They are not painted in a realistic style.

The scene feels magical because the animals are so realistic, compared with the rest of the painting, which is not.

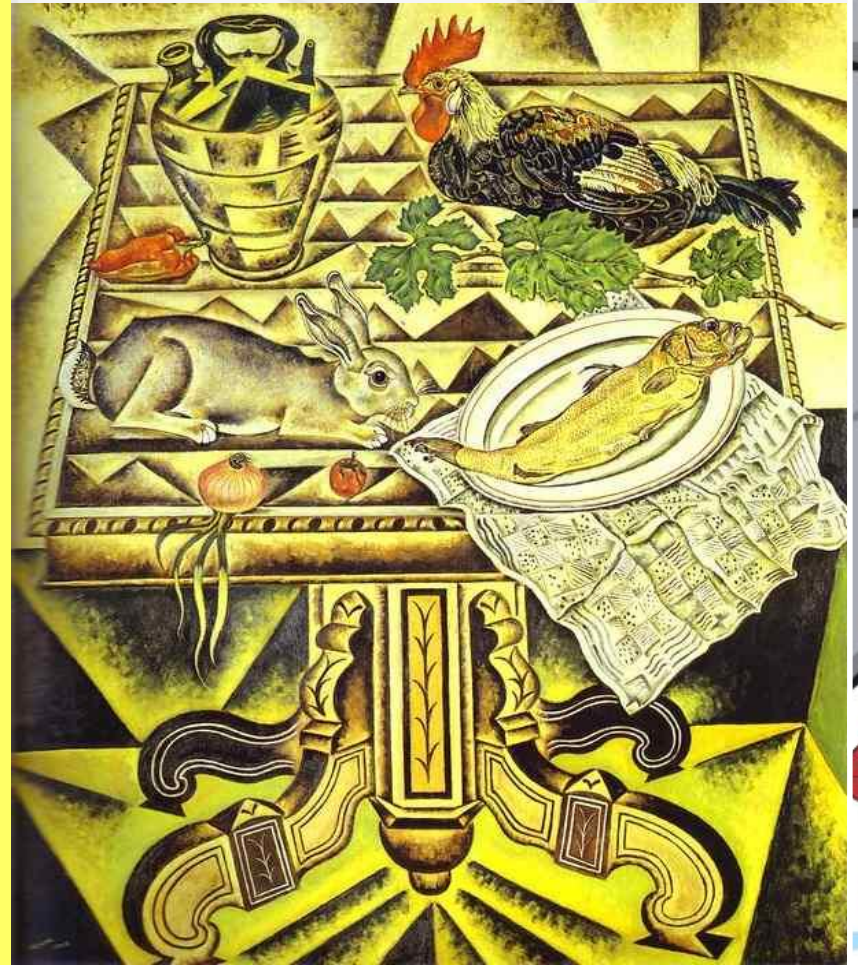


Photo courtesy of <http://www.joan-miro.net/the-table.jsp>

The Farmer's Wife, 1922 - 23



Photo courtesy of <http://www.abcgallery.com/M/miro/miro37.html>

The Farmer's Wife, 1922-23



Do you notice anything unusual or strange about this painting?

The woman's feet are far bigger than you would expect them to be in real life. The woman and the animals are painted in a less realistic style than the animals in 'The Table'.

The cat and the rabbit seem a little too big, compared to the woman.

Miró has used some shapes instead of real objects, such as the circle in the foreground of the painting.



Photo courtesy of <http://www.abcgallery.com/VM/miro/miro37.html>

The Farm, 1922

What can you see in this painting?



The Farm, 1922



What do you think the animals and the people are doing?



Photo courtesy of <http://www.joan-miro.net/the-farm.jsp>

Your Life



Miró felt that 'The Farm' was a painting of his entire life.

Think about your own life. What objects, people or animals are there in your life? Think about your home, your family, your pets, and the things you like to do.



Draw Your Life



We are going to make a picture of a house and a garden to make our own versions of 'The Farm'.

Choose lots of things from your own life to draw in the house and the garden.

Draw each thing carefully from your memory so that it looks realistic and use realistic colours in your work. Like Miró, try making some things seem smaller or bigger than they really are.

Your finished picture should tell people something about you.

