

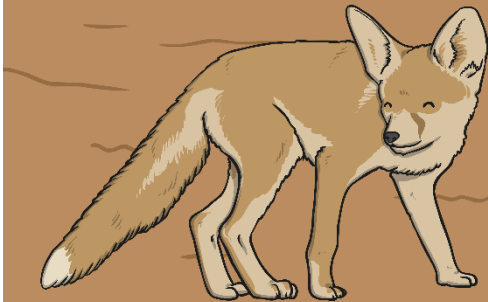
Microhabitats



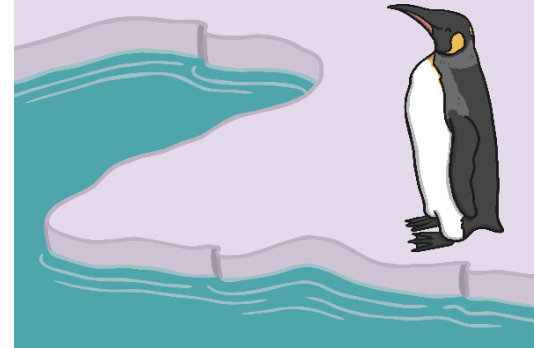
Habitats

A habitat is a place that an animal lives. It provides the animal with food, water and shelter.

There are many different sorts of habitats around the world from forests to grasslands and from mountain slopes to deserts.



Different habitats are home to different animals. They live well together because they all do things to help keep the whole habitat healthy.



Microhabitats

A microhabitat is a very small, special habitat, such as a clump of grass or a space between rocks. It can be part of a larger habitat, like a forest



It is a habitat for extremely small creatures such as woodlice or spiders.



A microhabitat has its own conditions of temperature and light, and its own characteristic species.

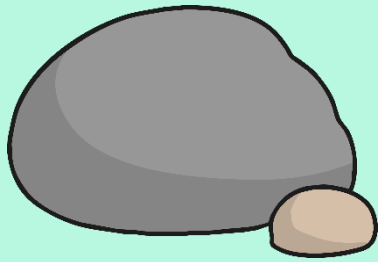
Microhabitats include the shady area under a tree and the underside of a rock in a stream.

Microhabitats

What microhabitats can you find in your garden, or when you go for a walk?

Microhabitats and Minibeasts

Here are some different microhabitats you might find in the local environment.



Under stones and rocks.



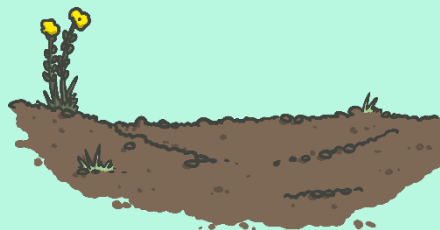
In short grass.



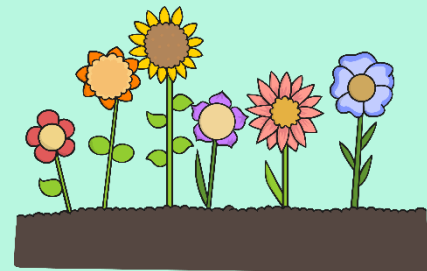
Inside rotting wood.



Under fallen leaves.



In and on the soil.



In tall grass and flowers.

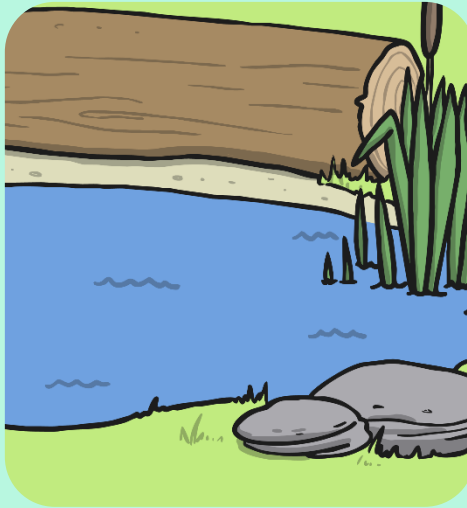
Microhabitats and Minibeasts

A minibeast is a small creature like an insect, a worm or a spider.

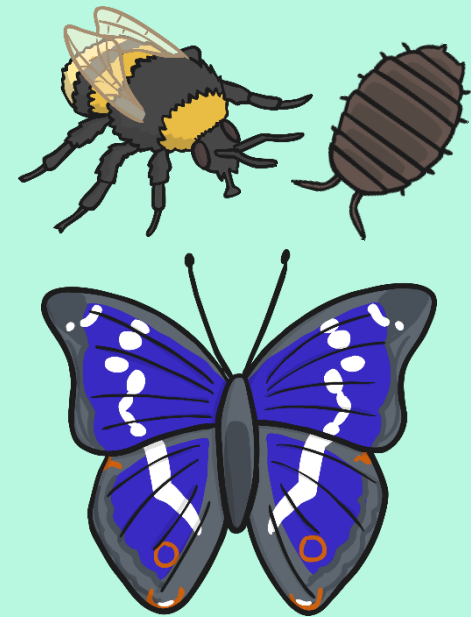
Many different minibeasts live in many different microhabitats.



They are suited to live in that microhabitat as they can find the food, water and shelter they need.

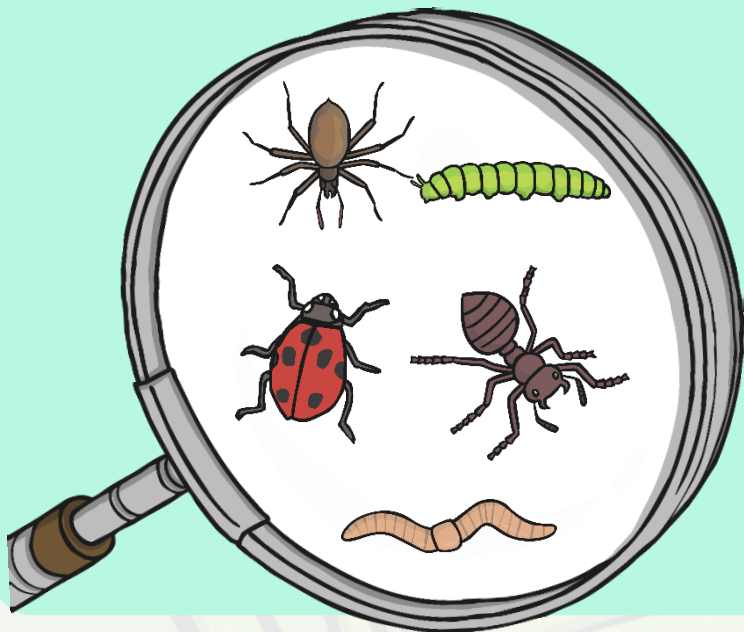


Minibeasts help to keep the microhabitat healthy.



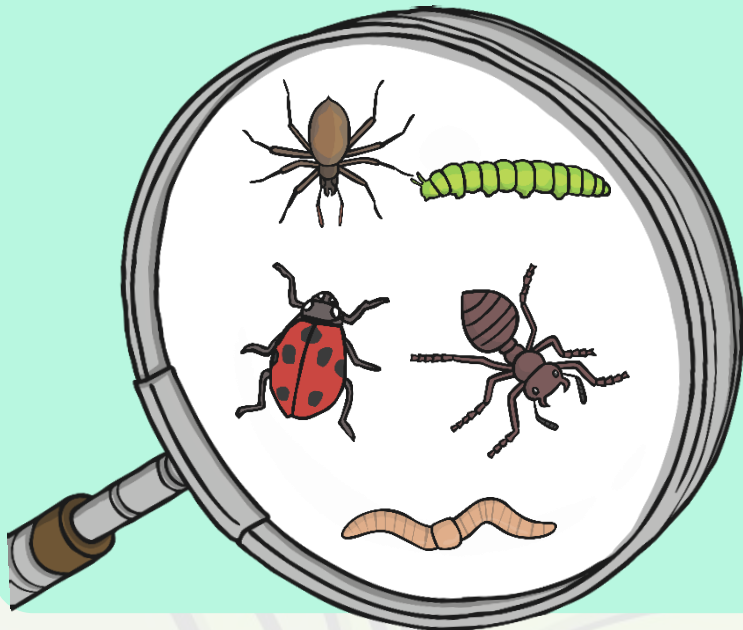
Microhabitats Survey

1. Choose two different microhabitats (eg a flowering bush and under a large rock).
2. Next, look very closely at each microhabitat and count up each kind of minibeast that you find there.



Microhabitats Survey















3. Look at your results. Did your habitats have different minibeasts? Can you explain why?



Microhabitats Survey








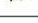





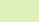
Microhabitats Enquiry - Survey

Look carefully at your two habitats. Count up the number of each kind of minibeast that you find there.

Minibeast		Habitat 2
Woodlouse		
Slug		
Snail		
Spider		
Beetle		
Fly		
Bee		
Millipede		
Butterfly		
Caterpillar		
Worm		
Ant		
Ladybird		
Wasp		
Other		

Microhabitats Enquiry - Survey

Look carefully at your two habitats. Count up the number of each kind of minibeast that you find there.

Minibeast		Habitat 1	Habitat 2
Woodlouse			
Slug			
Snail			
Spider			
Beetle			
Fly			
Bee			
Millipede			
Butterfly			
Caterpillar			
Worm			
Ant			
Ladybird			
Wasp			
Other	