

It's amazing just how different plants can be



Let's take a really close look at some

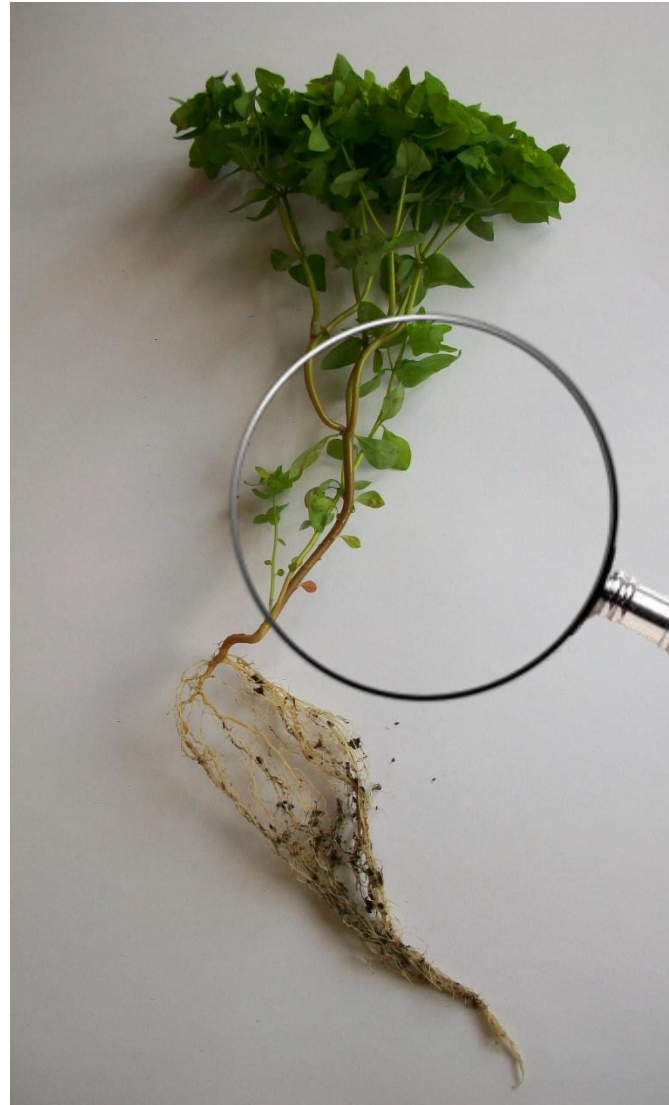


Your first job will be to choose one of the specimen plants to look at closely. You will need to sit very near to study it in detail.

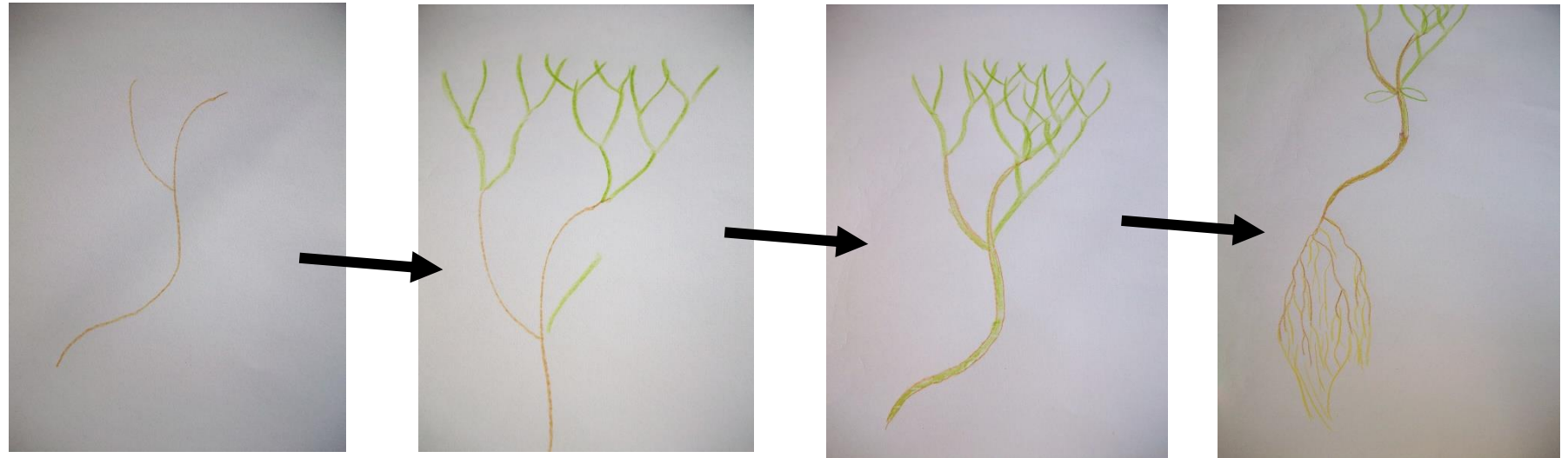


Your task will be to study every detail with care: the size, shape and colour of the leaves; the way the stem divides and the texture and colour of the roots.

Use a magnifying lens (if you have one!) to help you make a detailed drawing with colour.



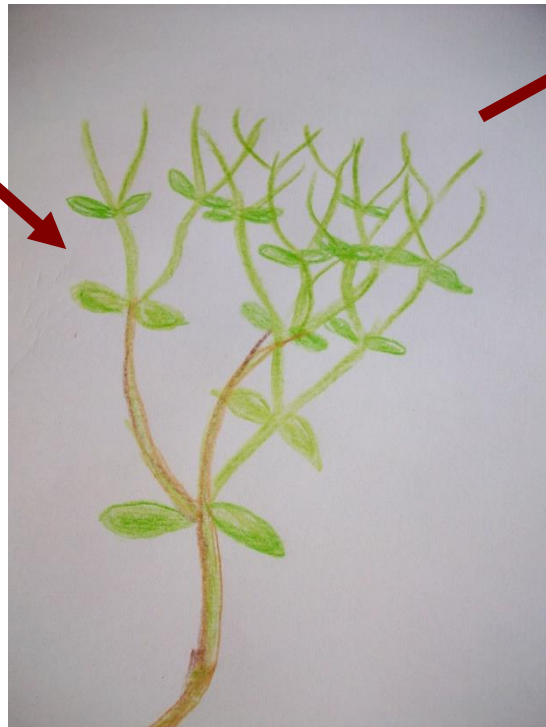
Here are a few tips to help you



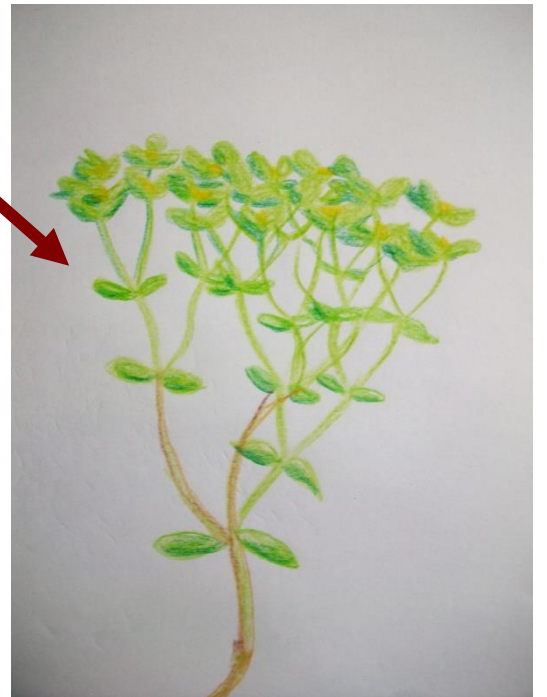
Begin by looking at the shape of the stem and the way it divides. Start by drawing it as a single line and then later thicken each line by just the right amount. Then look carefully at the roots and add lines to show the colour, texture and shape of them. Don't forget to use your magnifying lens.



Next add in the leaves. Check they are the right size, shape and colour



Blend your colours together to make the shade you can see





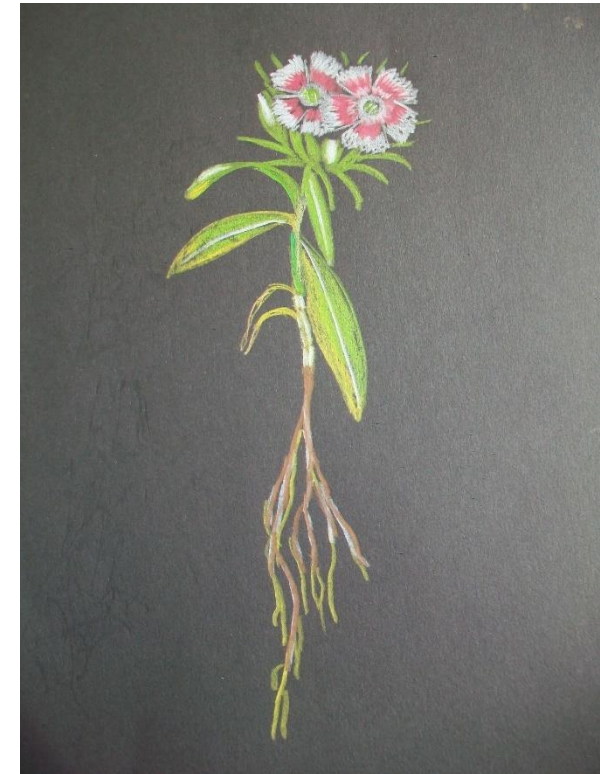
Using coloured paper can give your drawing a strong, vibrant feel

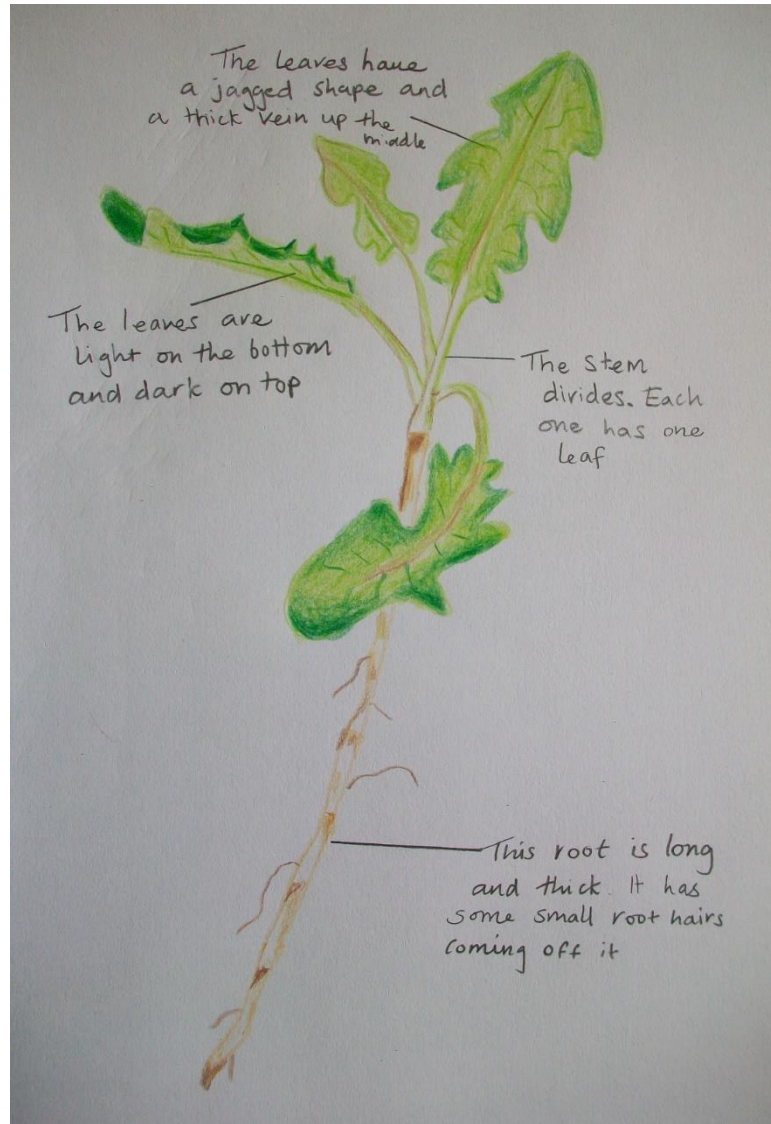


Black, brown or grey paper can work really well



If you look carefully you will see that stems, roots and leaves are made of many different shades. Blend different colours together to match every colour detail.

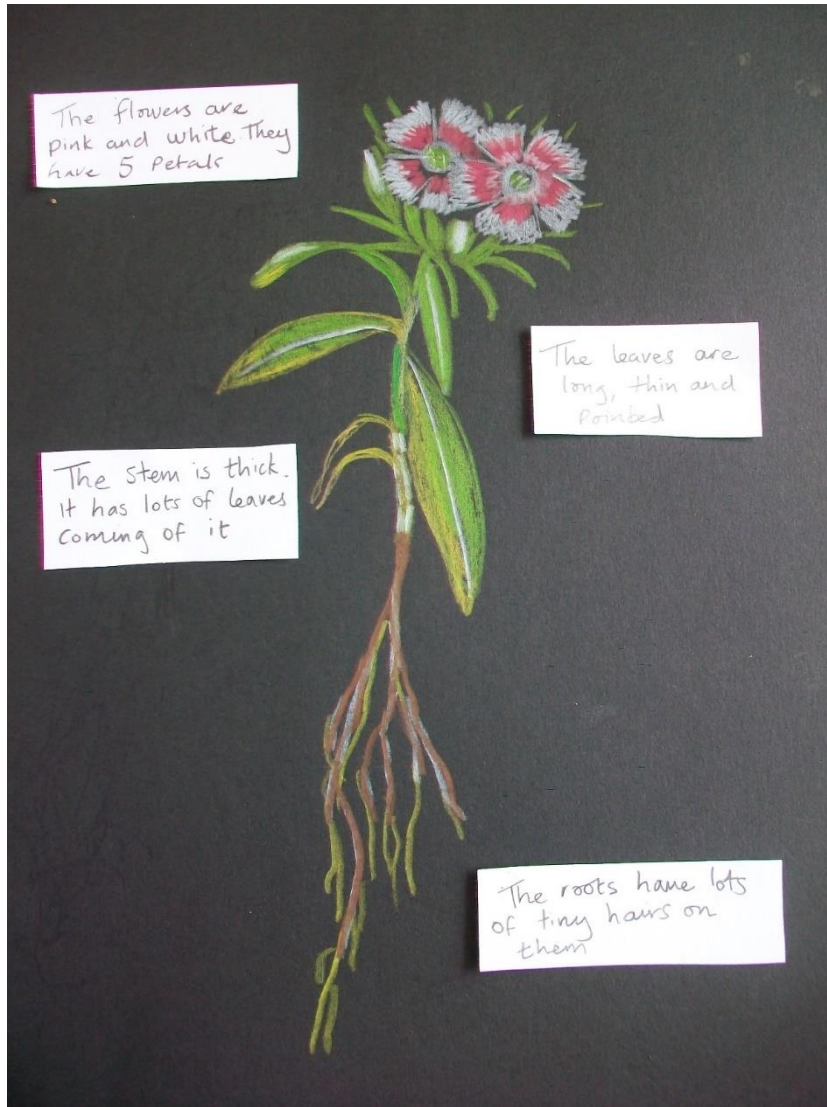




Once your drawing is finished, write some notes about the stem, roots leaves and flowers (if your plant has them).

Use a ruler to draw a line from that part of the plant to your notes





If your drawing is on coloured paper, make your notes on little pieces of white paper and stick them down with glue.

