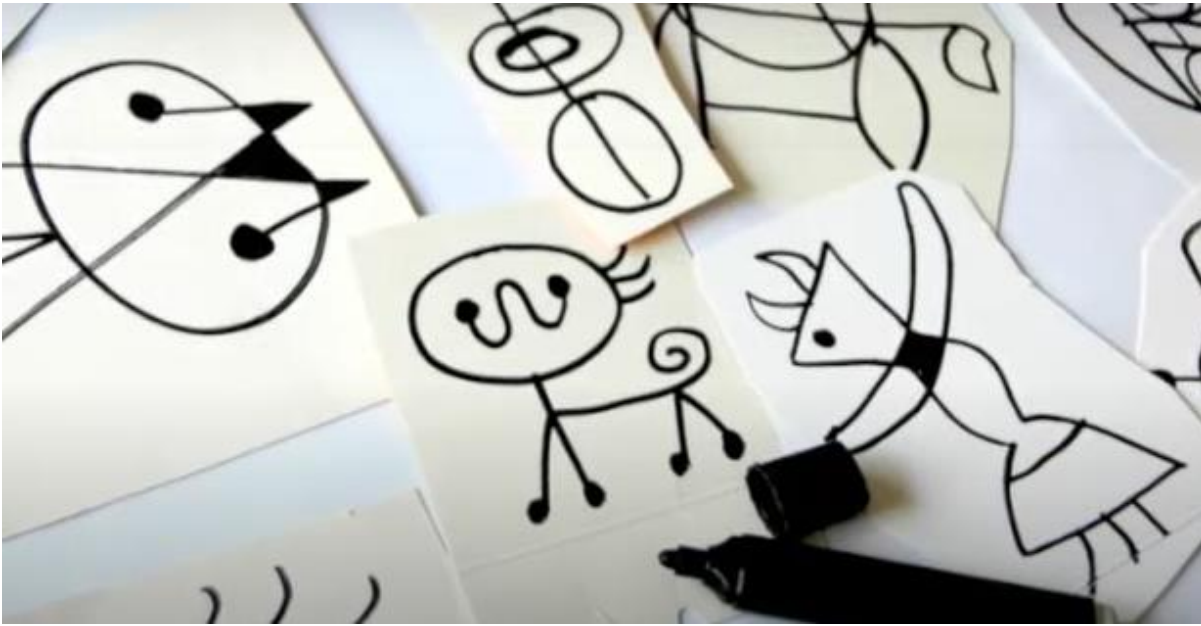


Make your own sculpture inspired by Miro.



Copy or design Miro inspired drawings onto card using black pen. You could use card from cereal boxes and other packaging as this will be quite strong. Make sure you make enough to join together for a sculpture (at least five).



Paint or colour your drawings.



Roughly cut out a bubble shape around your pictures. Do not cut exactly on the lines as we need your pictures to be strong.



If your card has writing or pictures on, paint over that side to cover it



Make cuts into your pictures so you can join them together



Join your cut out pictures by slotting them together.



You have made a sculpture inspired by Miro!