



# Punctuation Quiz





Full stops...

A

Show that you have finished a sentence

B

Show there is another sentence to follow

C

Shows that something is surprising or forceful



Full stops...

**A**

Show that you have finished a sentence

**B**

Show there is another sentence to follow

**C**

Shows that something is surprising or forceful



You put question marks...

A

At the end of a sentence

B

At the beginning of a sentence

C

At both the beginning and end of a sentence



You put question marks...

**A**

At the end of a sentence

**B**

At the beginning of a sentence

**C**

At both the beginning and end of a sentence



## Exclamation marks...

A

Show you've asked a question forcefully

B

Make it clear you've said something funny

C

Show something is surprisingly forceful



## Exclamation marks...

A

Show you've asked a question forcefully

B

Make it clear you've said something funny

C

Show something is surprisingly forceful



Commas are used...

A

Between clauses

B

At the end of a sentence

C

Instead of quote marks





Commas are used...

**A**

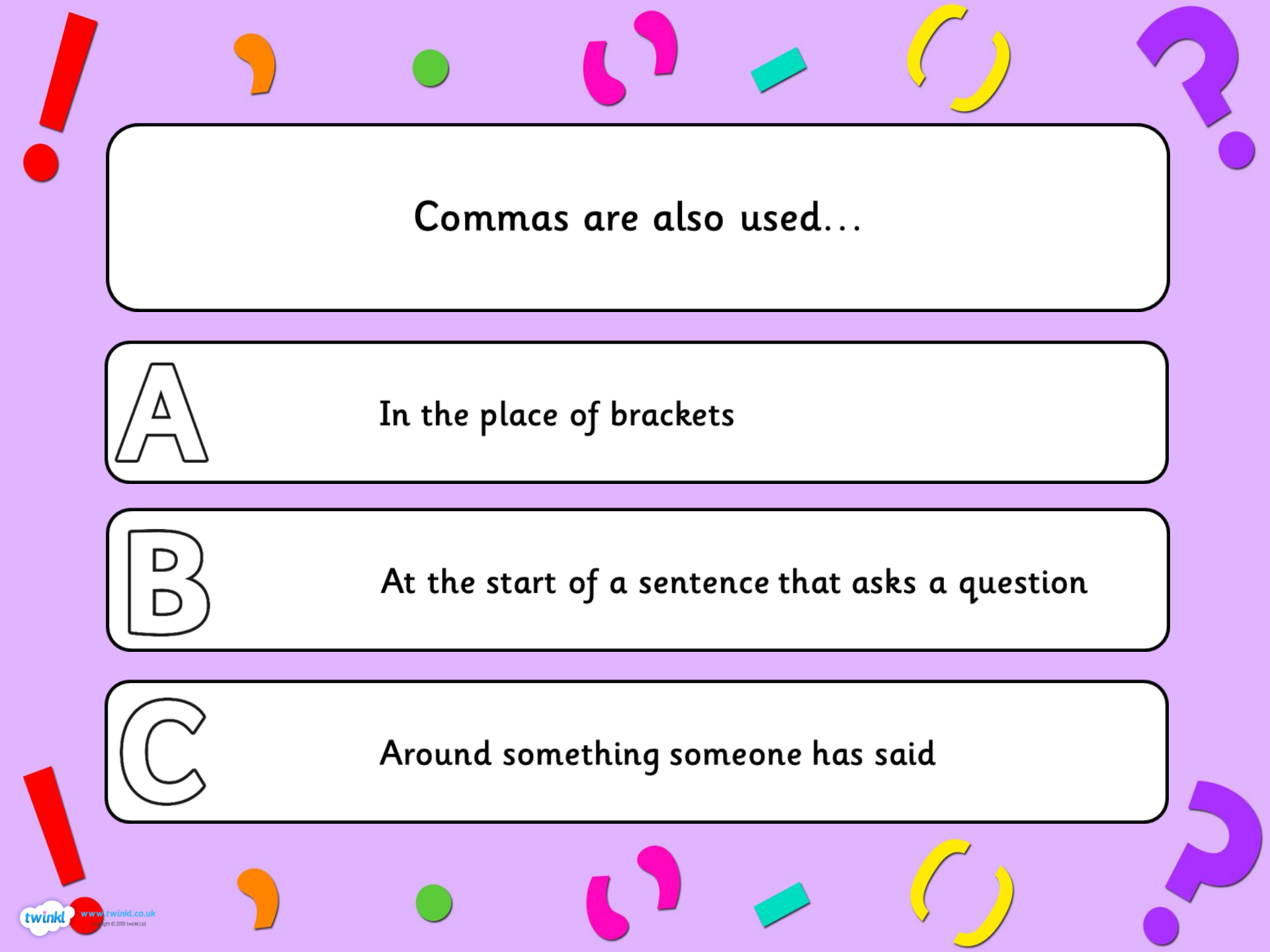
Between clauses

**B**

At the end of a sentence

**C**

Instead of quote marks



Commas are also used...

A

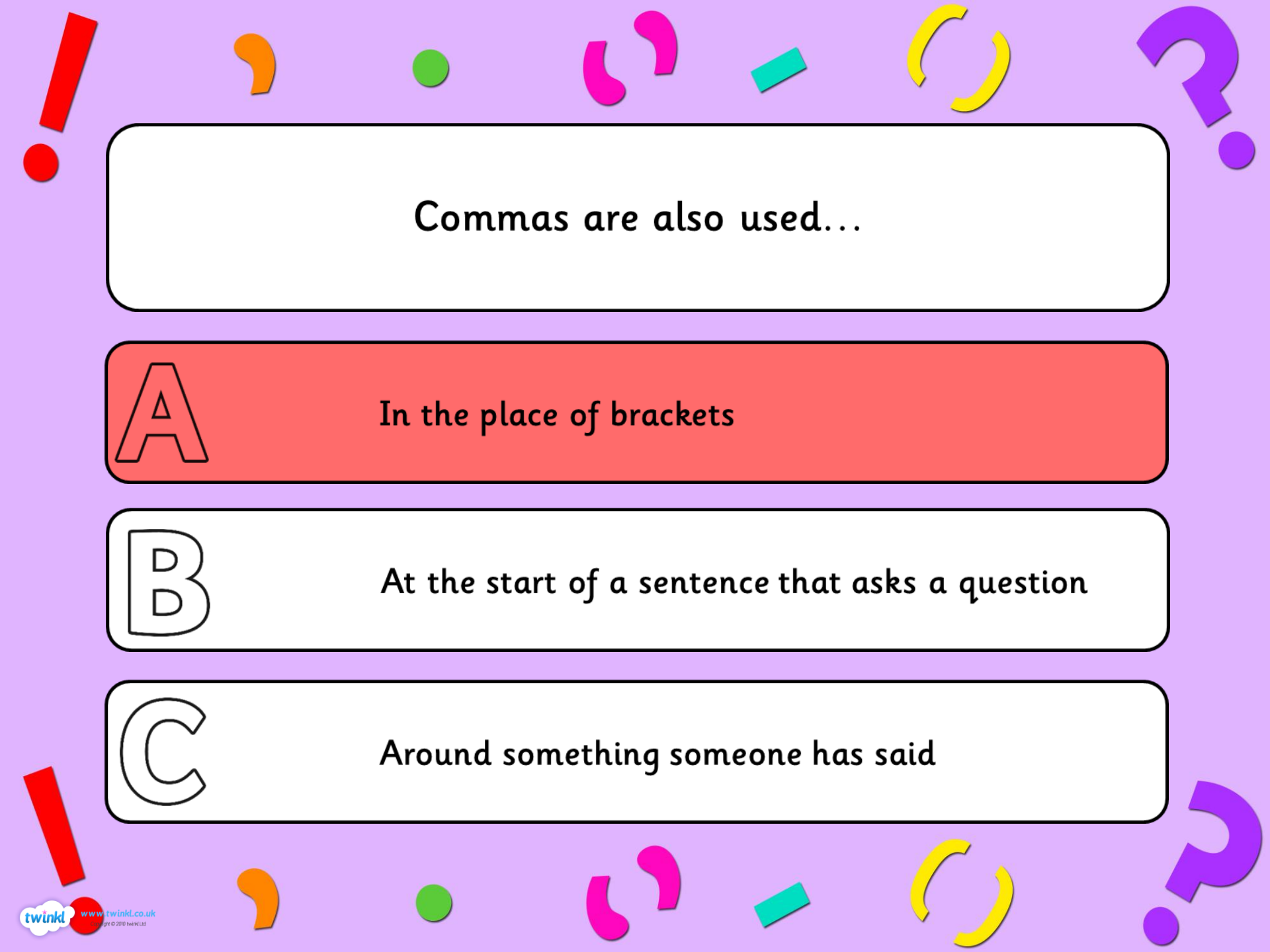
In the place of brackets

B

At the start of a sentence that asks a question

C

Around something someone has said



Commas are also used...

**A**

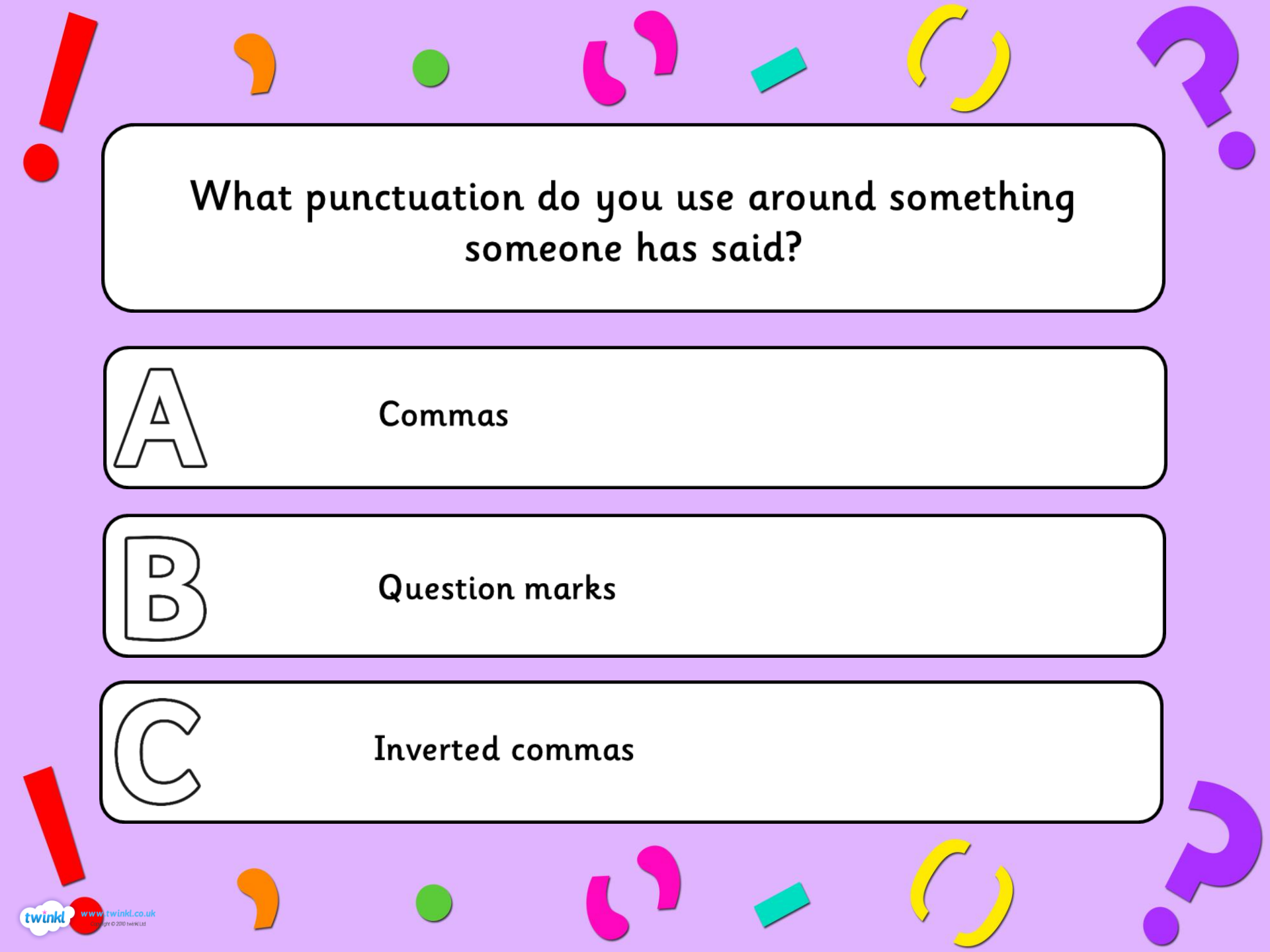
In the place of brackets

**B**

At the start of a sentence that asks a question

**C**

Around something someone has said



What punctuation do you use around something someone has said?

A

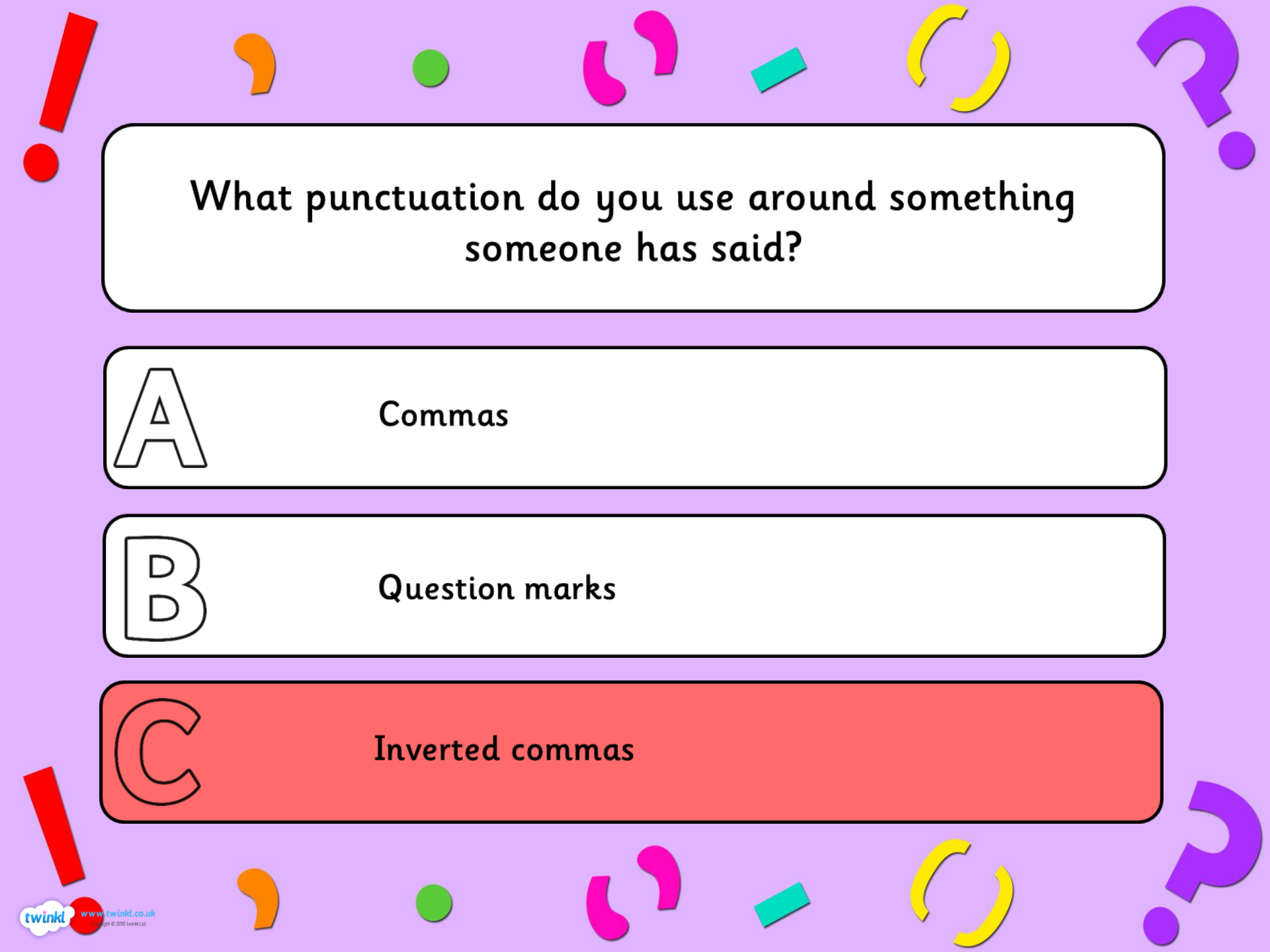
Commas

B

Question marks

C

Inverted commas



What punctuation do you use around something someone has said?

A


Commas

B

Question marks

C

Inverted commas



Apostrophes are used to show...

A


Something was said by someone

B

Part of a sentence is missing

C

One thing belongs to another (possessed)



Apostrophes are used to show...

A

Something was said by someone

B

Part of a sentence is missing

C

One thing belongs to another (possessed)



Apostrophes are also used...

A

In the place of brackets to show that something is extra information

B

Around something funny to show that it is a joke

C

To show you have omitted letters from a word or when joining a word





Apostrophes are also used...

A

In the place of brackets to show that something is extra information

B

Around something funny to show that it is a joke

C

To show you have omitted letters from a word or when joining a word



Which one of these sentences has the wrong punctuation in it?

A

'That's Amy's orange' he shouted.

B

All the character's in the story were tall.

C

My Mum's friend is called Kim.



Which one of these sentences has the wrong punctuation in it?

A

'That's Amy's orange' he shouted.

B

All the character's in the story were tall.

C

My Mum's friend is called Kim.



Which one of these sentences has the wrong punctuation in it?

A

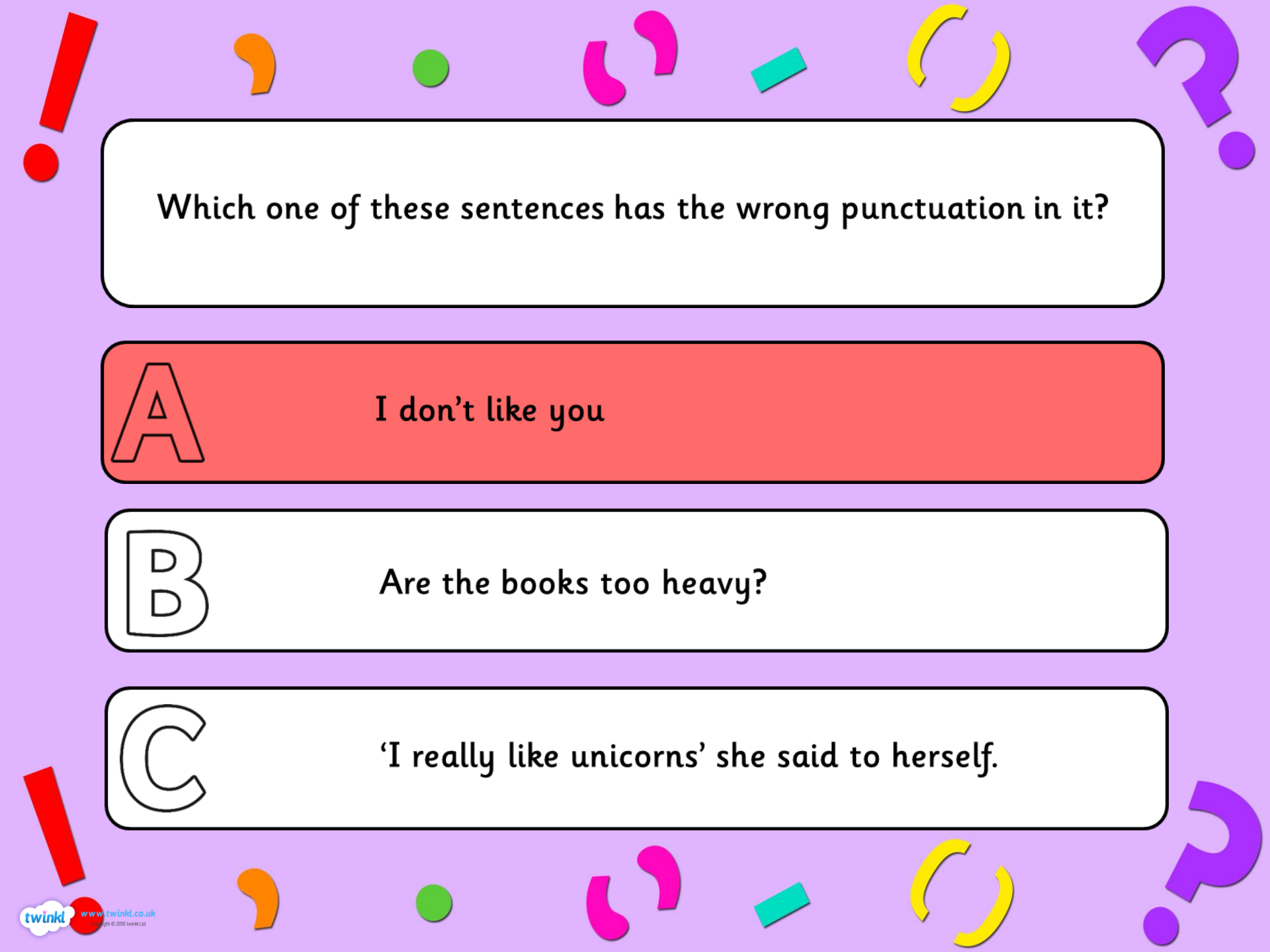
I don't like you

B

Are the books too heavy?

C

'I really like unicorns' she said to herself.



Which one of these sentences has the wrong punctuation in it?

**A**

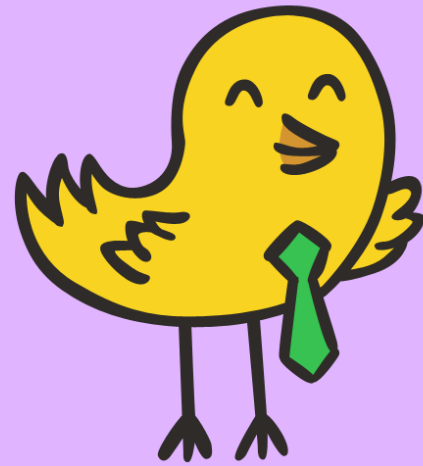
I don't like you

**B**

Are the books too heavy?

**C**

'I really like unicorns' she said to herself.



THE END