

Queen Elizabeth I

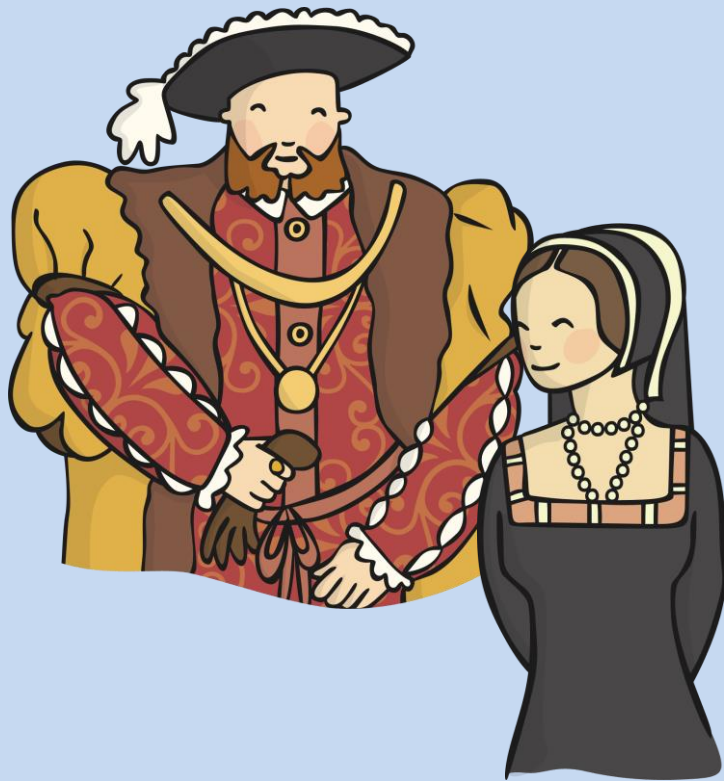


Who was Queen Elizabeth I ?

- Queen Elizabeth I was a famous Queen who ruled England, Ireland and Wales from 1558 to 1603.
- She was on the throne for 45 years!
- Her coronation was held on the 15th January 1559 at the Westminster Abbey.



Queen Elizabeth I's Family



- She was born at Greenwich Palace on 7th September 1533 and was the daughter to [King Henry VIII](#).
- Her father, Henry VIII was well known for having many wives!
- Queen Elizabeth I's mother was [Anne Boleyn](#) but King Henry VIII was not happy as he wanted a baby boy!

Queen Victoria



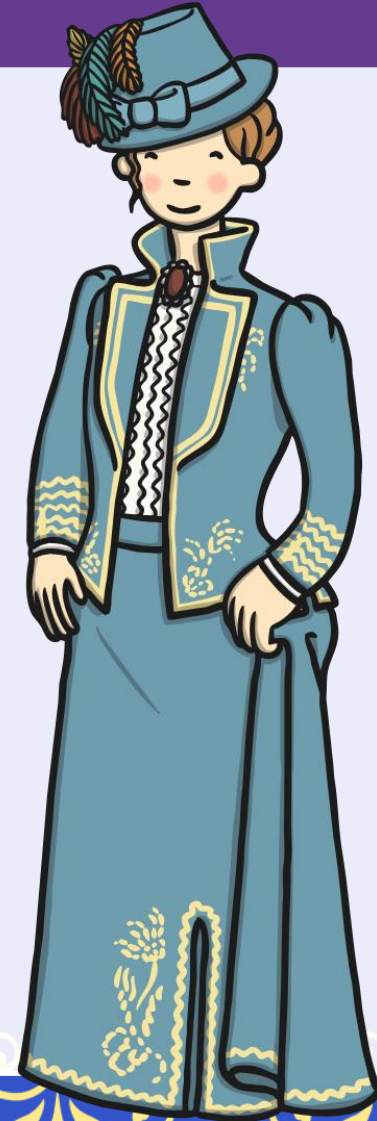
twinkl

twinkl

Quality Standard
Approved

Childhood

- Queen Victoria was born on 24th May 1819 in London.
- Her father, Edward, Duke of Kent died in 1820, when she was only a baby.
- She lived in Kensington Palace with her mother, Victoria, Duchess of Kent.



Early Reign

- Victoria became queen in 1837 aged 18.
- Her coronation was on 28th June 1838 at Westminster Abbey. It lasted for 5 hours and was a spectacular event.
- Queen Victoria reigned for 63 years and 7 months from 1837 until 1901. She reigned longer than any king or queen before her. She is still the second longest reigning monarch after Queen Elizabeth II, who passed her record on 9th September 2015.



The Queen

Elizabeth II



twinkl

Who is Queen Elizabeth II?

Queen Elizabeth II, was born on 21st April 1926 in Mayfair, London.

She was the first child of King George VI and Queen Elizabeth.

Queen Elizabeth II has served for 67 years. On 9th September 2015, she became the longest-reigning British monarch, surpassing her great-great-grandmother Queen Victoria.



Elizabeth Becomes Queen

Sadly, Queen Elizabeth II's father died in 1952 and she had to take the thrown. Her reign began on 6 February 1952 and is still going to this day.

Her Majesty Queen Elizabeth II's coronation took place in 1953 on 2 June at Westminster Cathedral in London.

