

# Mass is the measurement of how heavy an object is.

the  
same as

heavier

heaviest

less than



more than



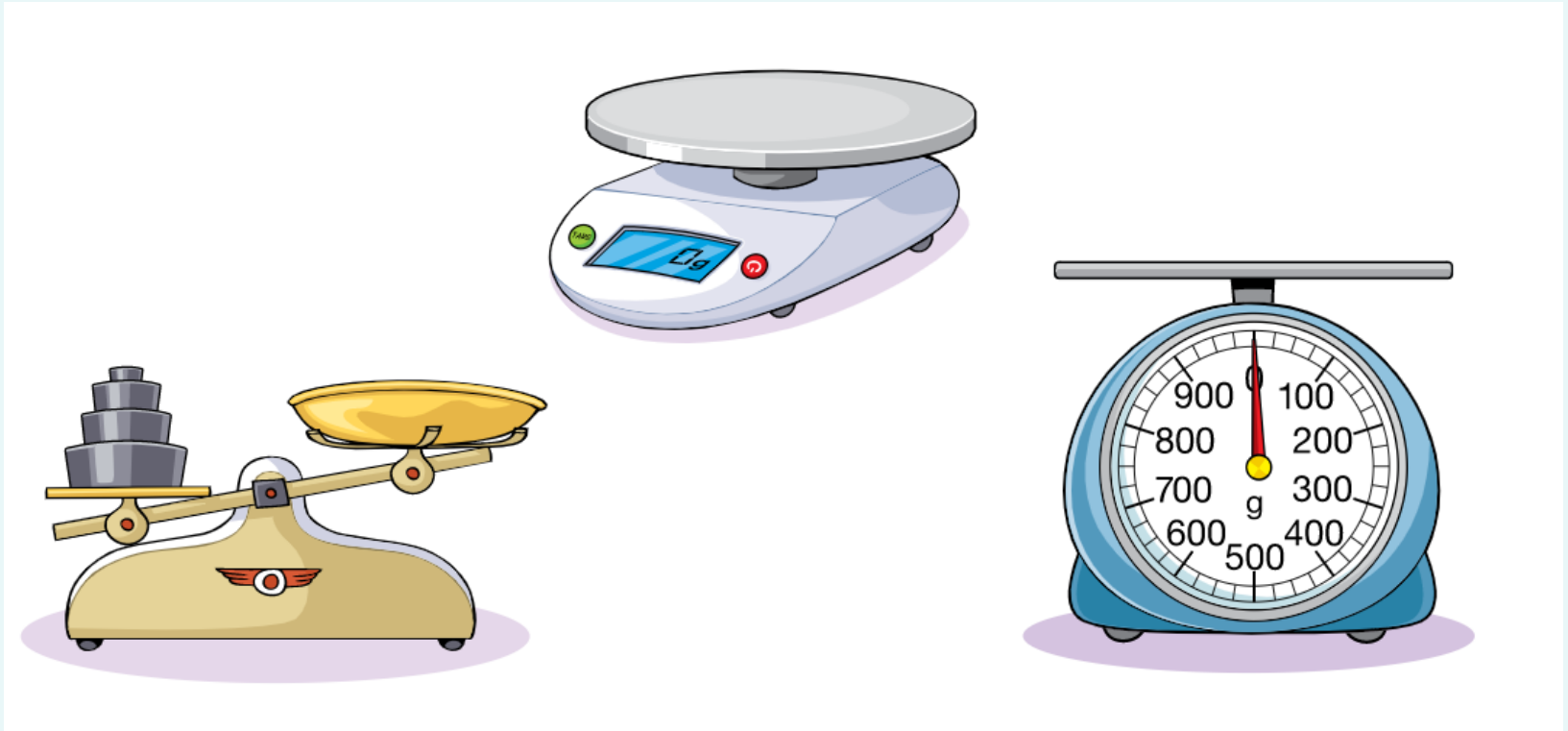
equal to



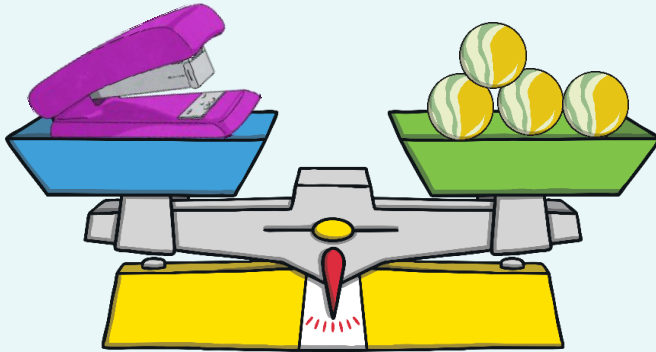
lighter

lightest

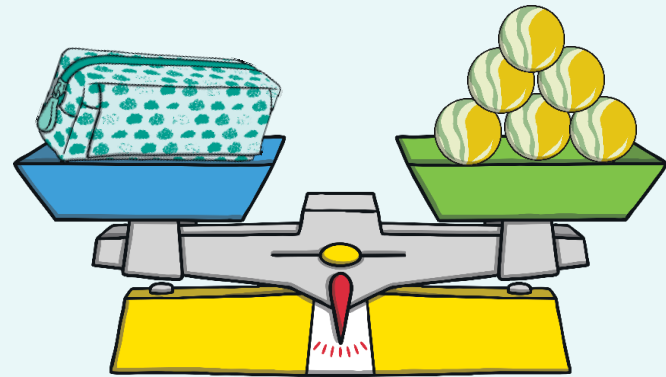
# We have many tools that measure mass



Find and compare the mass of the objects.



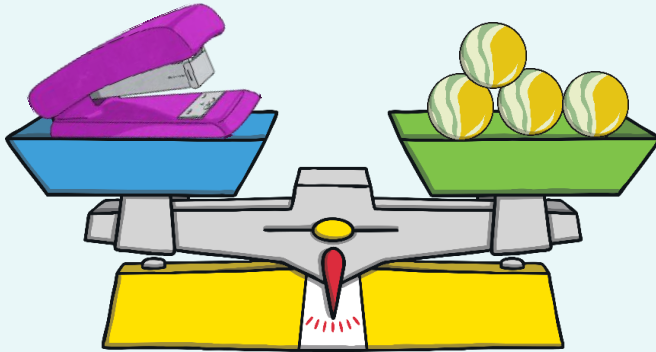
The stapler weighs \_\_\_\_\_  
marbles.



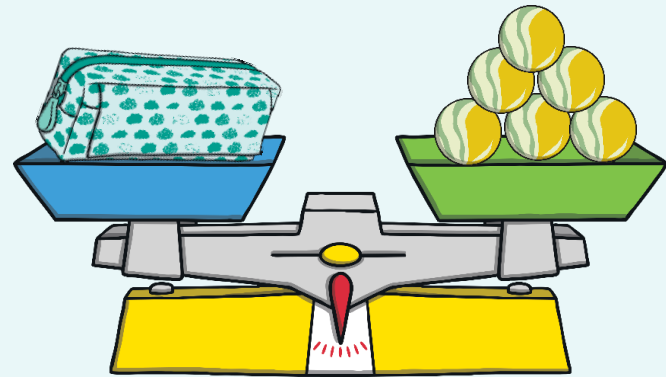
The pencil case weighs \_\_\_\_\_  
marbles.

The stapler is \_\_\_\_\_ than the pencil case.

Find and compare the mass of the objects.



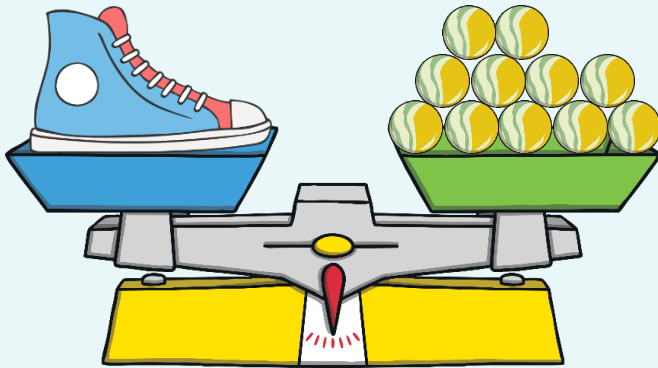
The stapler weighs 4  
marbles.



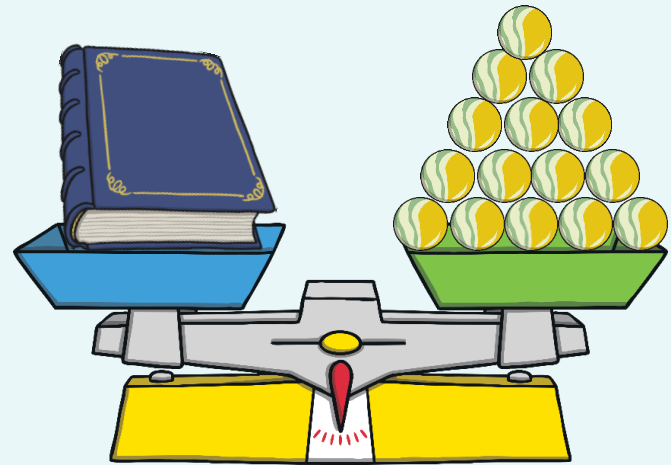
The pencil case weighs 6  
marbles.

The stapler is lighter than the pencil case.

Find and compare the mass of the objects.



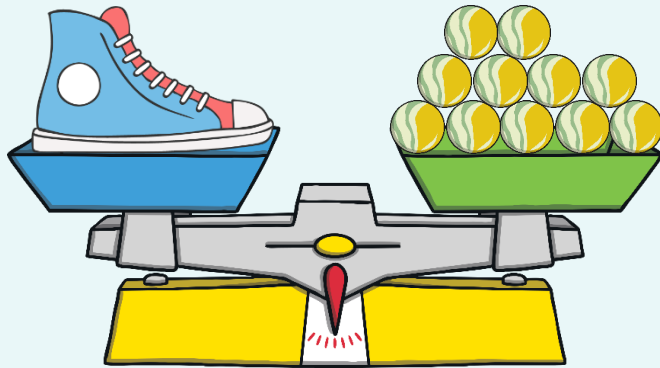
The shoe weighs \_\_\_\_ marbles.



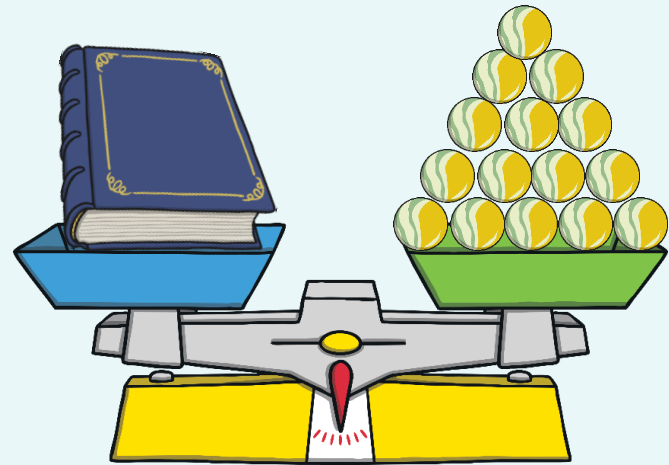
The book weighs \_\_\_\_ marbles.

The book is \_\_\_\_\_ than the shoe.

Find and compare the mass of the objects.



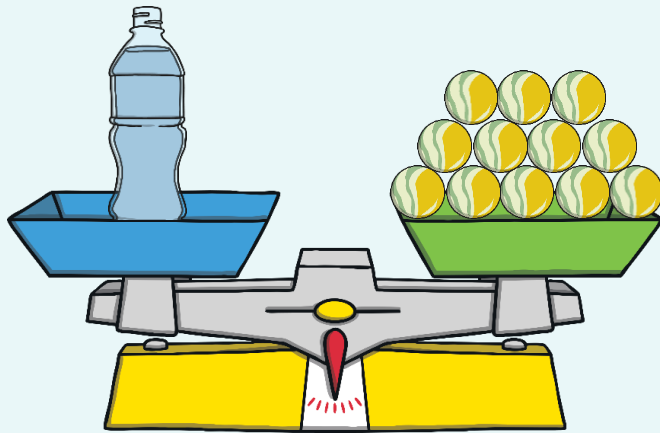
The shoe weighs 11 marbles.



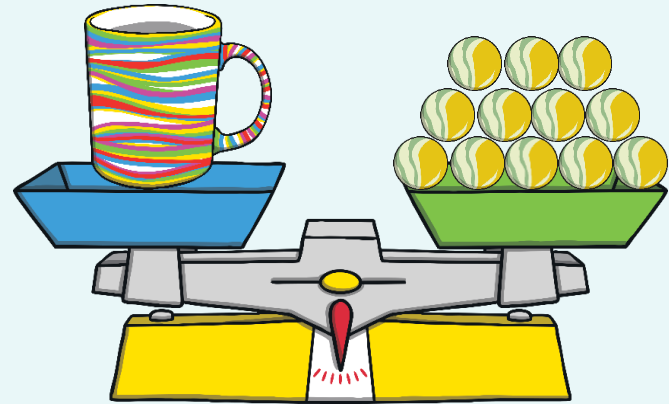
The book weighs 15 marbles.

The book is heavier than the shoe.

Find and compare the mass of the objects.



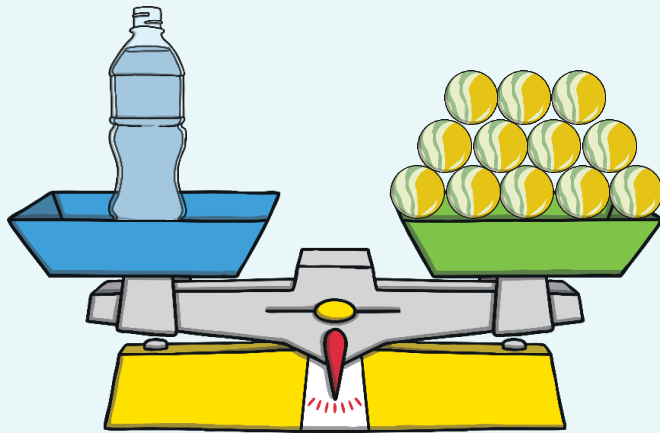
The bottle weighs \_\_\_\_ marbles.



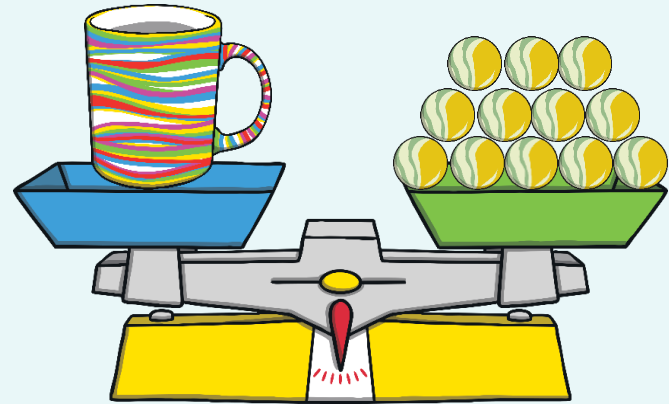
The mug weighs \_\_\_\_ marbles.

The mug is \_\_\_\_\_ the bottle.

Find and compare the mass of the objects.



The bottle weighs 12 marbles.

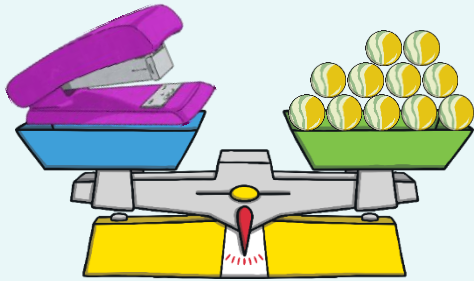


The mug weighs 12 marbles.

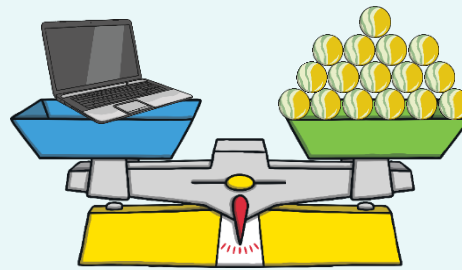
The mug is the same as the bottle.



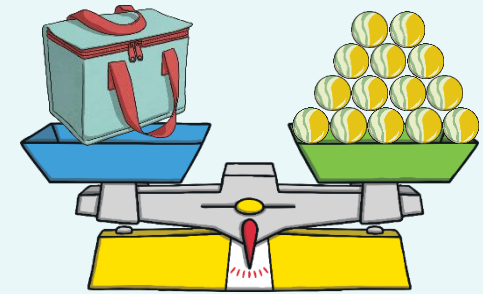
Find and compare the mass of the objects.



The stapler  
weighs  
\_\_\_\_\_ marbles.



The laptop  
weighs  
\_\_\_\_\_ marbles.

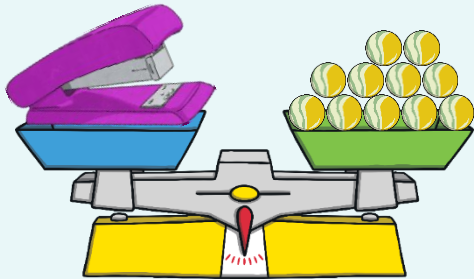


The lunch box  
weighs  
\_\_\_\_\_ marbles.

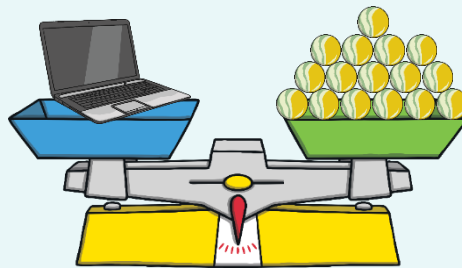
The stapler is the \_\_\_\_\_.

The laptop is the \_\_\_\_\_.

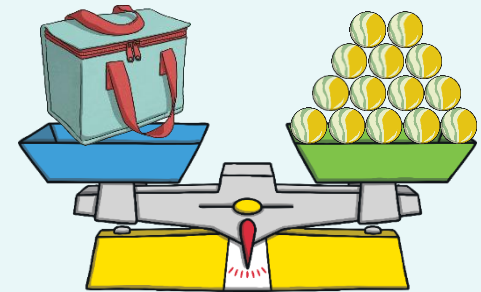
Find and compare the mass of the objects.



The stapler  
weighs  
11 marbles.



The laptop  
weighs  
16 marbles.



The lunch box  
weighs  
14 marbles.

The stapler is the lightest.

The laptop is the heaviest.