



Yr 2, 06.07.20

Maths-

Fluency-Sharing/Dividing \div (Division symbol)

Today you are going to be making equal groups by sharing

Share the 12 cubes equally into the two boxes.

There are ___ cubes altogether.

There are ___ boxes.

There are ___ cubes in each box.



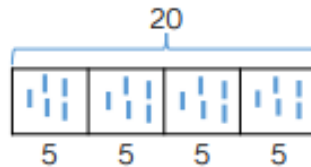
Can you share the 12 cubes equally into 3 boxes?

24 children are put into 4 equal teams.

How many children are in each team?

Can you use manipulatives to represent the children to show how you found your answer?

Ron draws this bar model to divide 20 into 4 equal groups.
How does his model represent this?
He writes $20 \div 4 = 5$



What other number sentences could Ron create using his model?

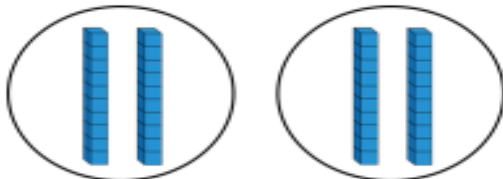
Problem solving

Jack says,



I can work out $40 \div 2$ easily because I know that 40 is the same as 4 tens.

This is what he does:



$$40 \div 2 = 20$$

Is it possible to work out $60 \div 3$ in the same way?

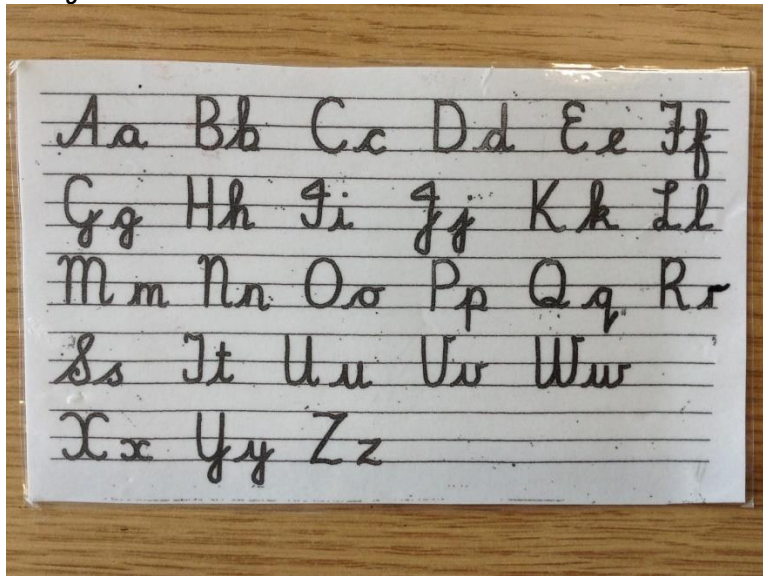
Prove it.

Is it possible to work out $60 \div 4$?

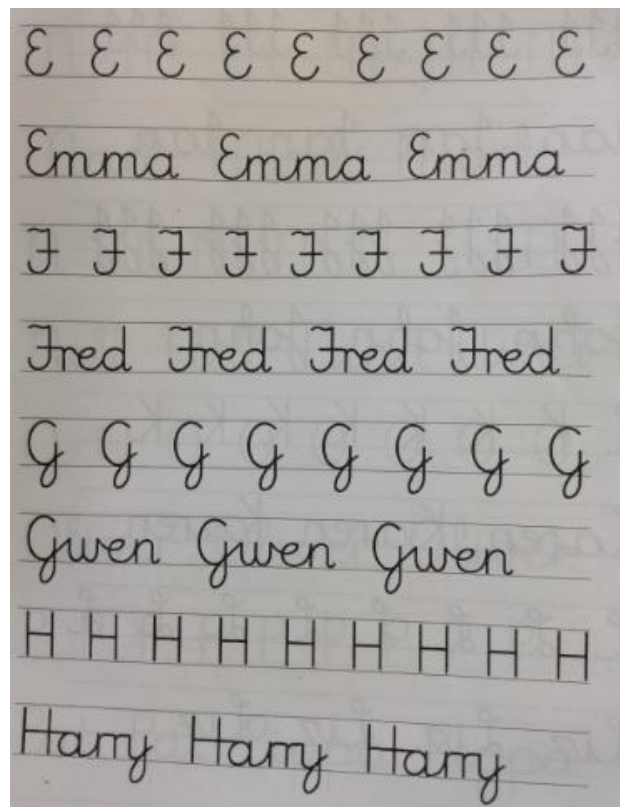
What is different about this calculation?

Handwriting

Can you remember how we form our cursive letters?
Keep practising!



Copy the words on a piece of paper, concentrating on your letter formation. There are capital letters too!



Spellings

Practise spelling words ending in -tch

catch

fetch

kitchen

notch
hutch

Now I would like you to learn these words... Words spelt -ge at the end of a sentence.

age
huge
change
charge
village

Write 2 sentences using words from your spellings.

Foundation subject - History

What were Seaside holidays like in the past?

Today we are learning about the features of a seaside holiday.

Watch the power point 'Seaside holidays, Monday 6th July' then think about what you can see, hear, taste, smell and feel whilst you're at the seaside.

Look at the worksheet below and write sentences for each part.

At the Seaside

At the seaside I can see _____

At the seaside I can hear _____

At the seaside I can taste _____

At the seaside I can smell _____

At the seaside I can feel _____

