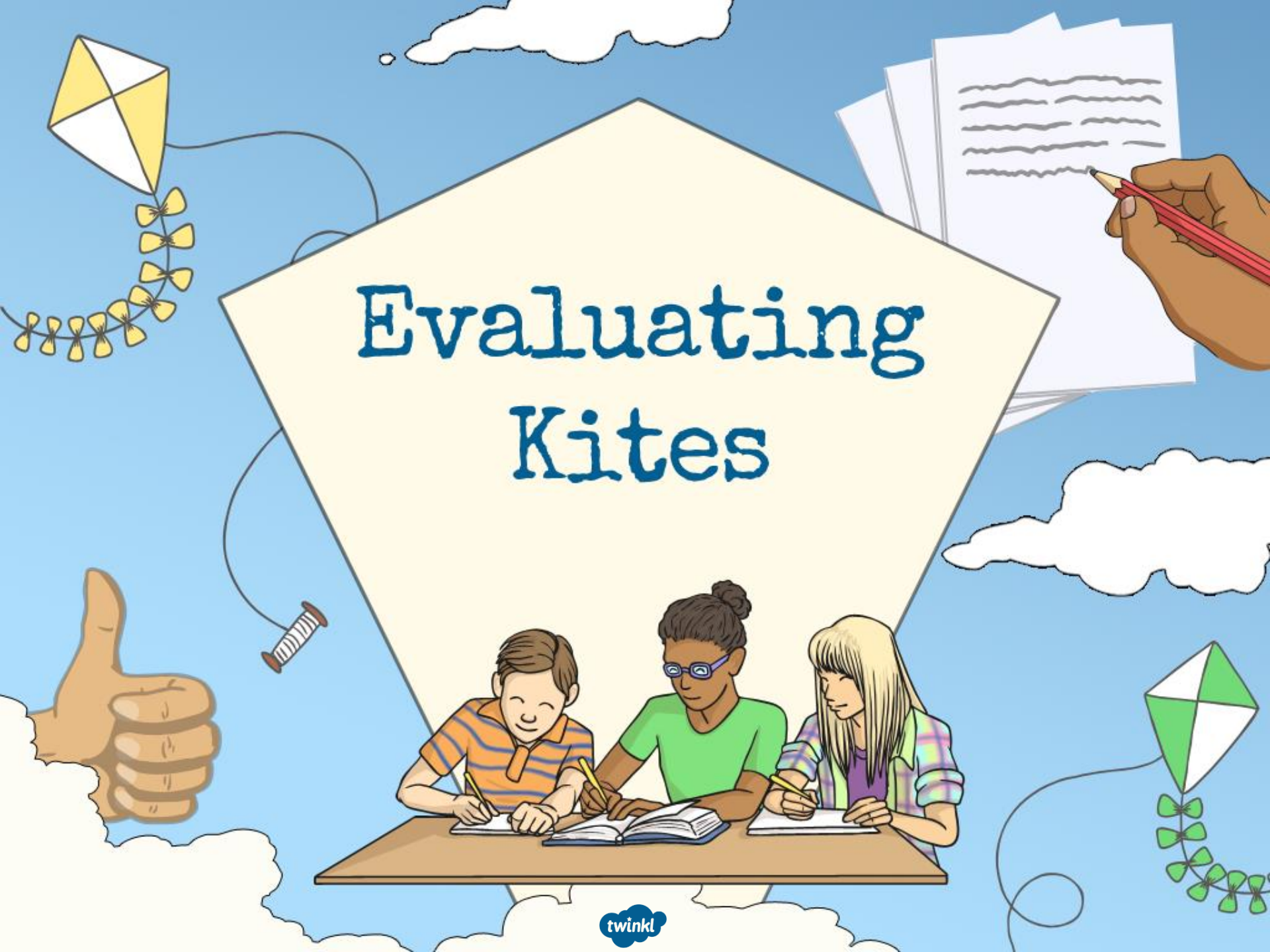


Evaluating Kites





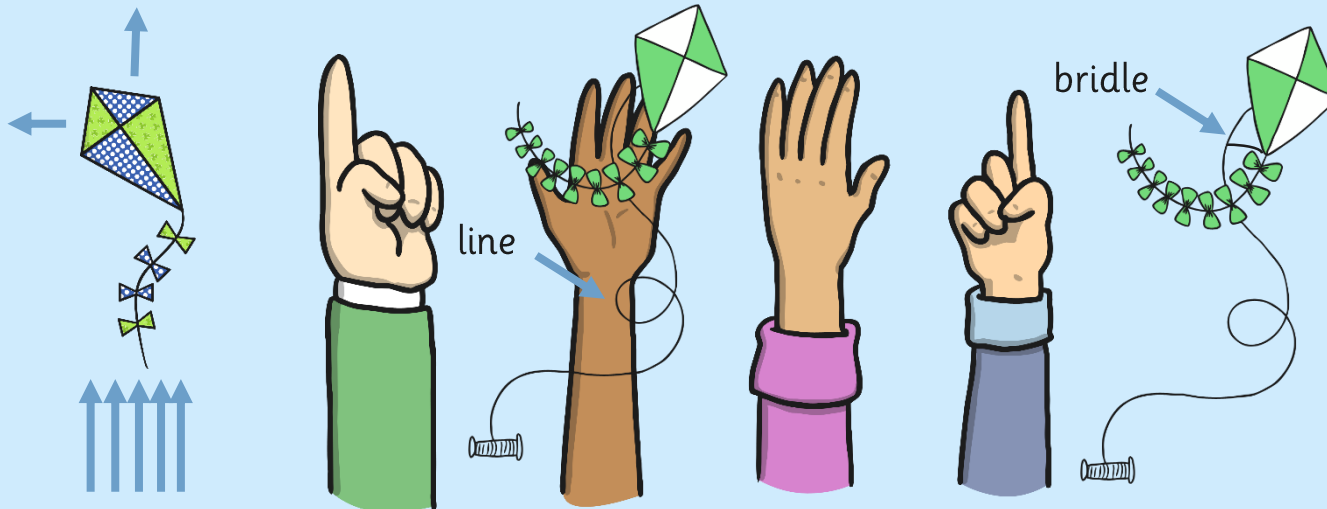
The Bridle and Line

Who can remember and explain the job of the bridle and line?

Kite flying is a balance between aerodynamic forces, the weight of the parts of the kite, and the spreading of these forces.

In flight, the kite is connected to the flyer by the line and the flyer can feel the tension in the line created by the forces on the kite.

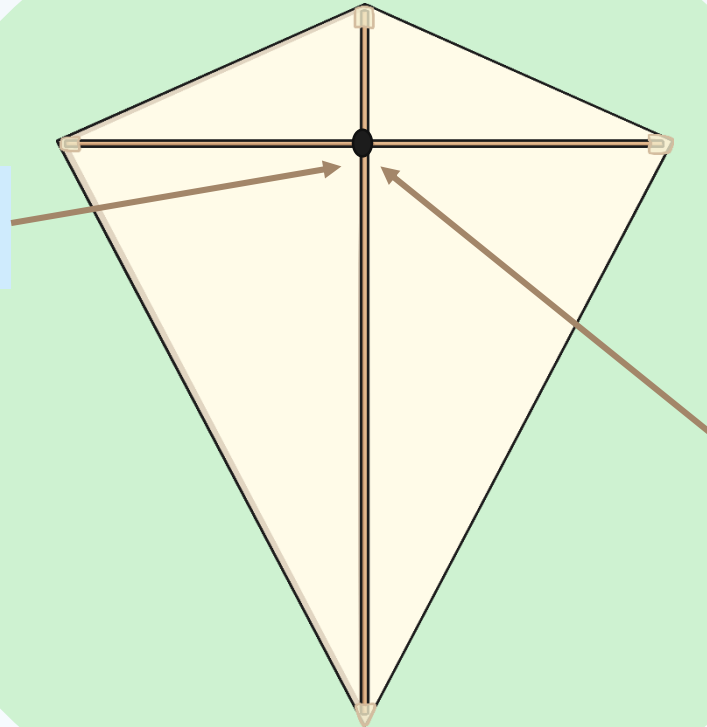
The line is connected to the kite by a string bridle. The place where the bridle connects to the line is called the bridle point and the kite pivots about this point in flight.



The Bridle and the Line

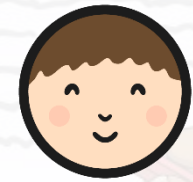


Make a hole in the sail.



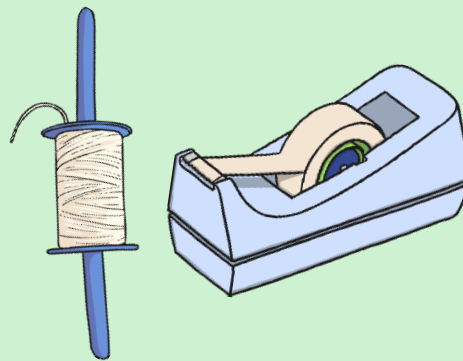
Tie the flying line through the hole.

Attaching the Bridle and the Line



Decide where you want to put your bridle, if using one, and your line.

You will then need to attach it to the kite using a method of your choice, such as using masking tape or tying it to the frame.



Adding a Tail

Who can remember the job of the tail of the kite?

The tail adds drag and weight to the kites lower end to keep the kite pointed into the wind. Adding a tail to a kite helps make it fly more stably.



Photo courtesy of fontplaydotcom (@flickr.com) - granted under creative commons licence - attribution

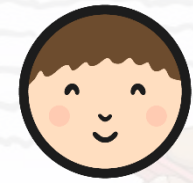
Adding a Tail



The tail can be made in many different ways.

Photo courtesy of wolfpix, photofox and mattymatt (@flickr.com) - granted under creative commons licence - attribution

Making and Attaching the Tail



- Decide what you would like your tail to look like.
- Use the different materials to make your tail.
- Securely attach the tail.

